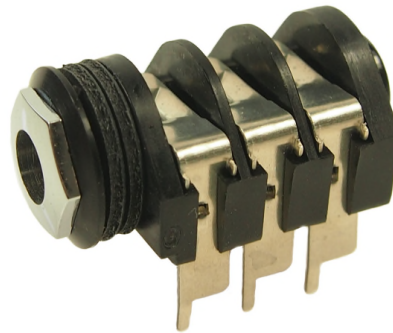




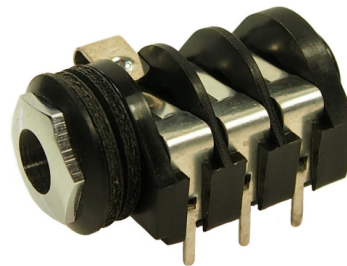
S4/BBB Solder Tag



S4/BBB/PC-A



S4/BNB/PC-C Kinked



S4/MBB/PC-C

The **CLIFF**[®] range of S4 Jack Sockets incorporates our Ni-Ag[®] Alloy Self-Cleaning Contacts for superior performance and reliability. All models have a durable premium quality nylon body. Mounting hardware is normally supplied unassembled. The S4 Jack Socket is available with optional chassis grounding in mono and stereo with unswitched, switched or make contacts and with a choice of either solder tag or six standard PCB mounting versions.

Significant features include:

- Ni-Ag[®] Alloy Self-Cleaning Contacts for superior performance and reliability.
- Optional 'Kinked' legs for snap-in PCB mounting on PC-A and PC-C styles to facilitate pre-assembly and wave soldering.
- Tough, moulded Nylon body. Standard colour black.
- Optional chassis grounding versions.
- Optional plated contacts.
- Optional EMI/RFI screen.
- Optional combined nut to bezel.

Cliff Electronic Components, Ltd.

76 Holmethorpe Avenue, Holmethorpe Ind. Est.
Redhill, Surrey RH1 2PF. England

Tel: +44 (0) 1737 771375

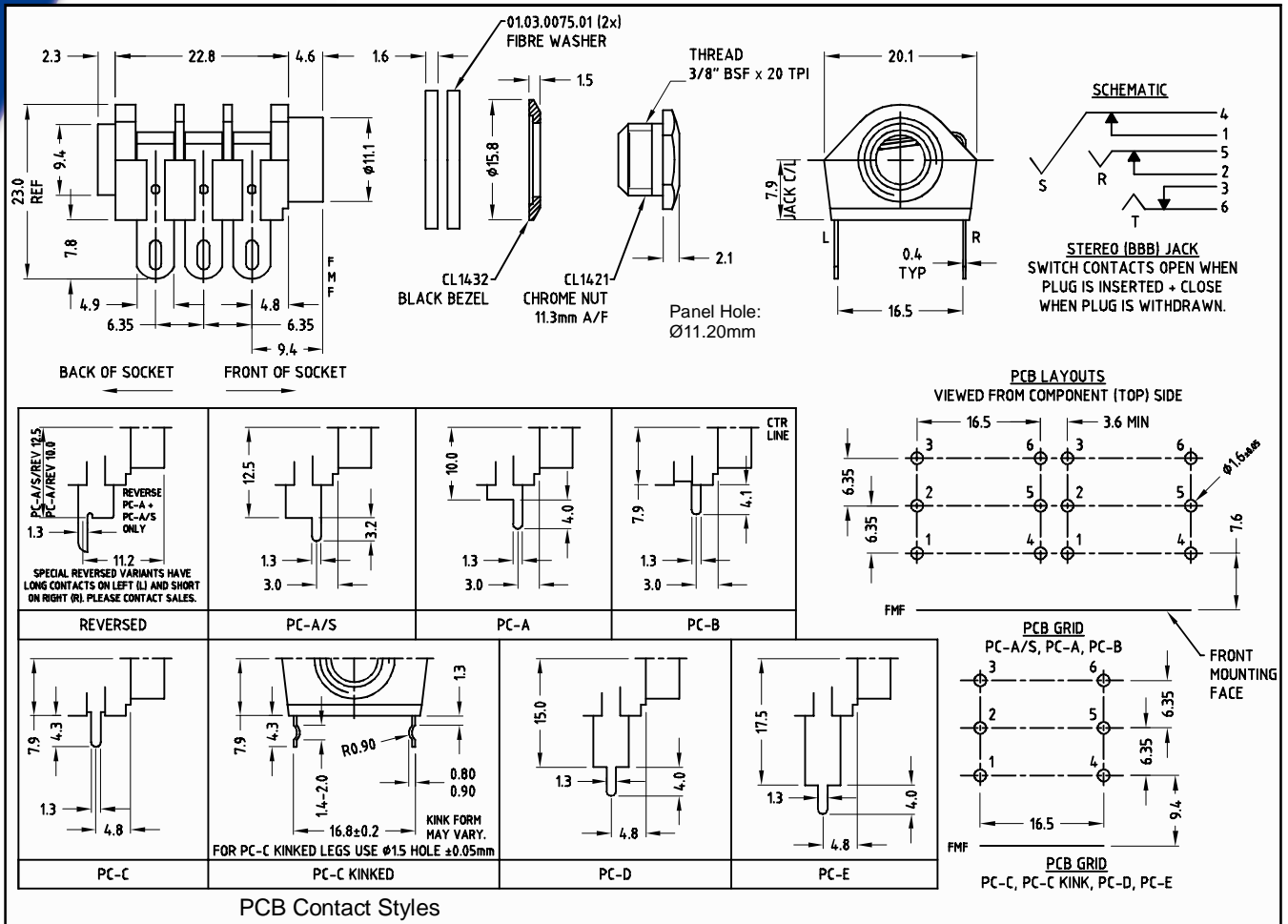
Fax: +44 (0) 1737 766012

Email: sales@cliffuk.co.uk



Visit us online at:

www.cliffuk.co.uk



Specification:

- Withstand Voltage:** 2000V DC Min
- Maximum Current:** 5 amps
- Temperature Rating:** -10°C to +70°C
- Life (Minimum):** 10,000+ Operations
- Nominal Contact Resistance:** <50mΩ

Technical Data:

Designed to receive both mono and stereo 1/4" jack plugs, the S4 socket is produced from grade 1 black nylon and is supplied with a high quality chrome plated brass nut. Mounting is effected by screwing the chrome facia nut (with plastic bezel) into a threaded bush which protrudes from the body. Coloured bezels are also available for identification purposes.

For superior performance, the contacts are CLIFF® Ni-Ag® Alloy and are designed to self-clean upon insertion and removal of the jack plug. Contacts can also be supplied with our special low noise Ni-Ag® Tin or Gold plating, and in addition to the standard solder tag version, there are six different PCB mounting styles available. The S4 can also be supplied with prefitted EMI/RFI screen if required.

When ordering, please state the contact arrangement required, with a plug inserted, from the front of the jack socket, using the following codes.

B - Break, M - Make, S - Single, N - No contact.

For example, S4/BMB/PC-C is a 3-pole stereo jack socket, 1st contact - Break, 2nd contact - Make and 3rd contact - Break with PC-C style contacts.



S2 Coloured Bezels



S4 Combined Nut & Bezel



S4 EMI/RFI Screen

Drawings available on request. Contact sales@cliffuk.co.uk