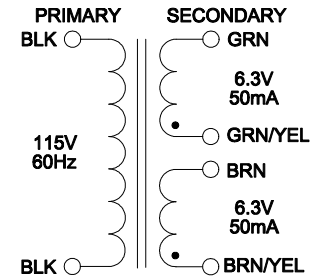
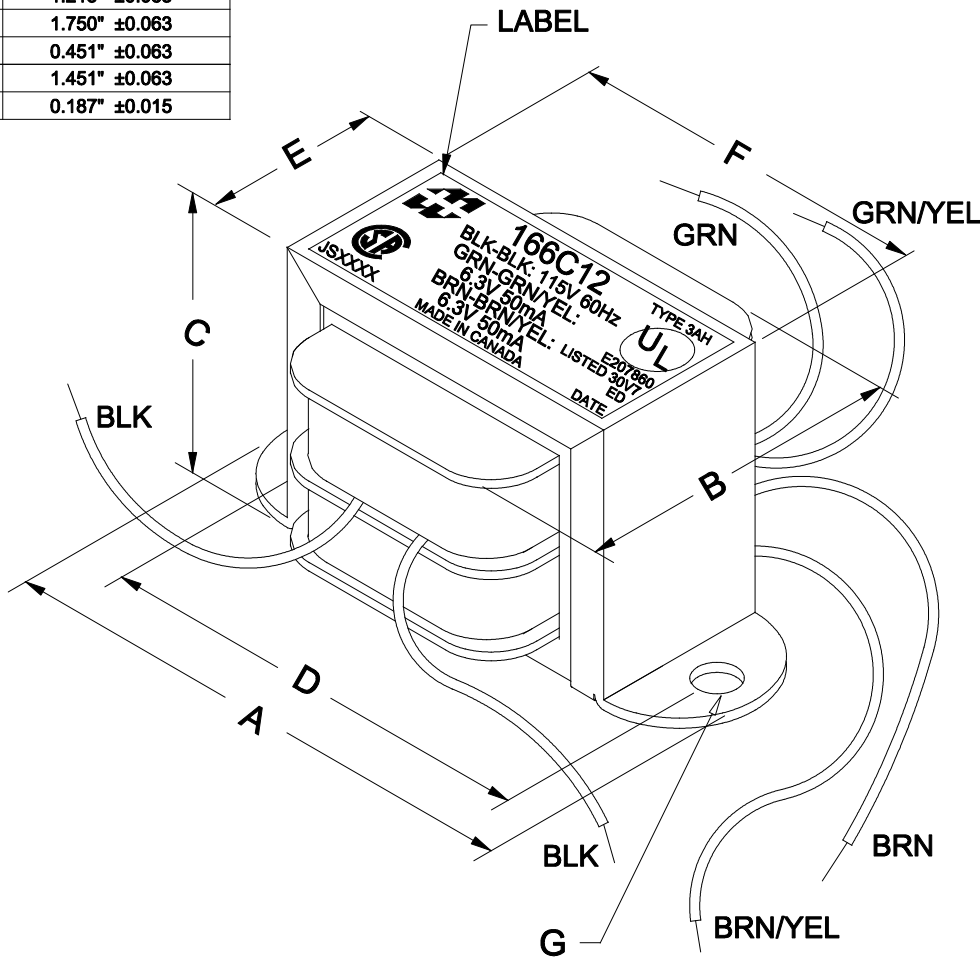


DIMENSIONS:	
A	2.063" ±0.063
B	1.250" ±0.125
C	1.215" ±0.063
D	1.750" ±0.063
E	0.451" ±0.063
F	1.451" ±0.063
G	0.187" ±0.015



NOTE: ALL LEADS 6" OUT MIN. STRIPPED 0.5"

ELECTRICAL DATA:		
TESTS	CONDITIONS	ACCEPTANCE CRITERIA
I _{ex}	@ 115V, 60Hz, BLK - BLK	22.80mA Max.
Sec. N.L.V	@ 115V, 60Hz, BLK - BLK	
	GRN - GRN/YEL =	7.259V ±2%
	BRN - BRN/YEL =	7.259V ±2%
DCR	@ 20°C, BLK - BLK =	528.9 Ω ±20%
	@ 20°C, GRN - GRN/YEL =	4.247 Ω ±20%
	@ 20°C, BRN - BRN/YEL =	4.247 Ω ±20%
HIPOT	PRIMARY - SECONDARY	2000V, 60Hz, 1 SEC

REV.#	REVISION	DATE	HAMMOND ELECTRONIC DIVISION		
0	RELEASED.	C.I. 01/30/15	52 RANKIN PLACE, WATERLOO, ONTARIO, N2J 3Z5		
			PH # (519) 886-6181 FAX # (519) 886-9540		
			DWG. BY: C. ILIE	CHK'D BY:	TITLE: POWER TRANSFORMER
			DATE: 01/30/15	APP'D. BY:	DWG. NO. 166C12
				DIMENSIONS: IN(X) MM()	