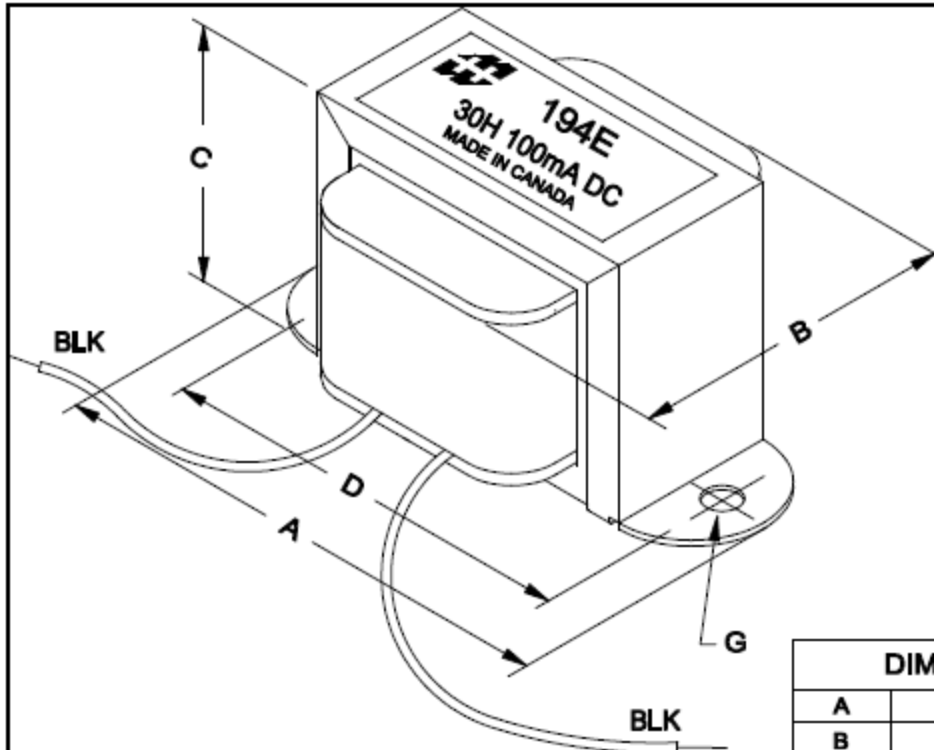


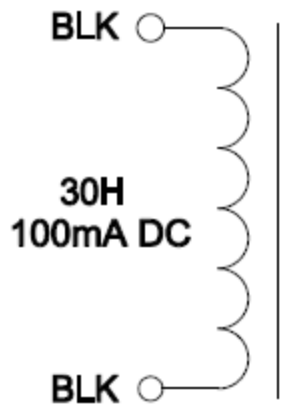
194E



NOTE: ALL LEADS 12.5" LONG.

DIMENSIONS:

A	4.000" ±0.063
B	2.085" ±0.125
C	2.620" ±0.063
D	3.563" ±0.063
G	0.203" x 0.312" ±0.015



ELECTRICAL DATA:

DCR	@ 20C, BLK - BLK = 517.2 Ω ±15%
PrL Inductance	30H @ 100mA DC

TITLE  
CHOKE OR REACTOR TRANSFORMER

			DR BY IOAN POP	194E
0	05/12/09	PRELIMINARY.	LP. DATE 05/12/09	
NO	DATE	REVISION	DIM IN(X)MM( )	